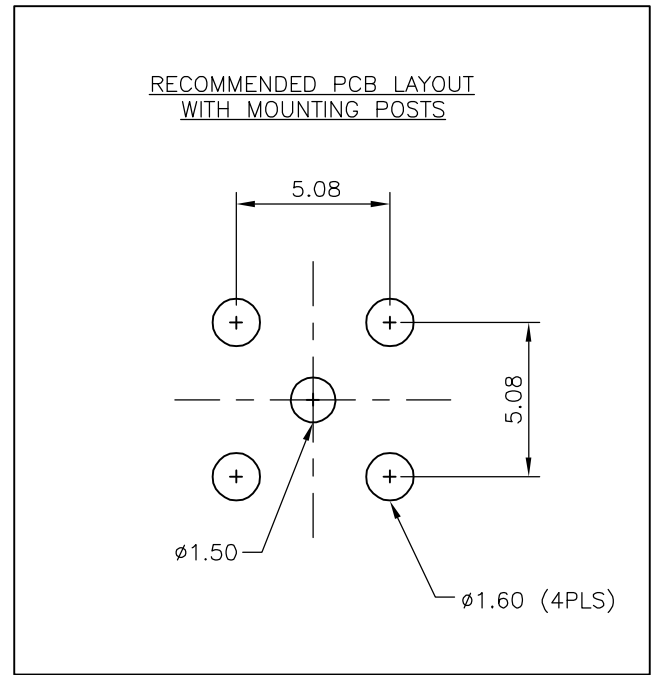
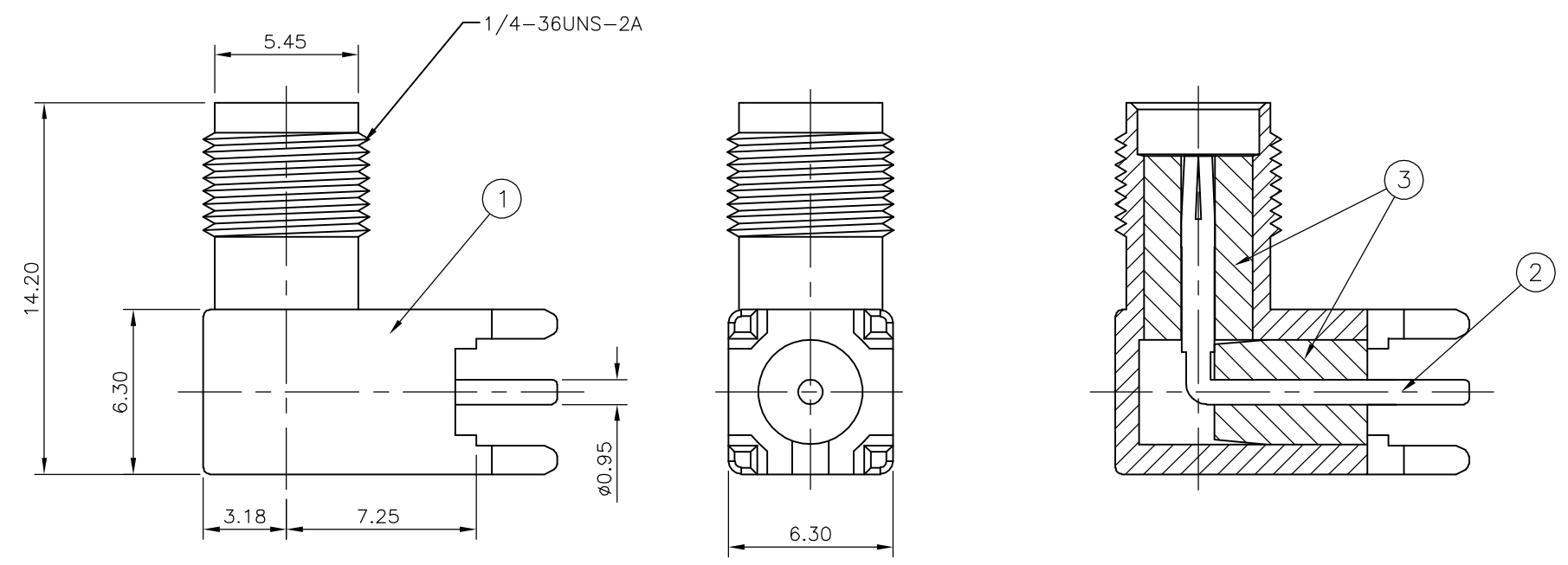


THIS DRAWING IS UNPUBLISHED. RELEASED FOR PUBLICATION JUNE ,2004.  
 © COPYRIGHT 2004 BY TYCO ELECTRONICS CORPORATION. ALL RIGHTS RESERVED.

LOC	DIST	REVISIONS					
E	B	P	LTR	DESCRIPTION	DATE	DWN	APVD
		B		ECR-06-026419	09NOV06	JMS	FWK

- NOTES**
- 1 SINGLE PACK IN ACCORDANCE WITH AMP SPEC 107-3275
  - 2 100 TRAY PACK IN ACCORDANCE WITH AMP SPEC 107-3275
  - 3 Au PLATING
  - 4. **ELECTRICAL CHARACTERISTICS**  
 FREQUENCY RANGE: DC-3GHz  
 NOMINAL IMPEDANCE: 50 OHMS  
 INSULATION RESISTANCE: 5000 MOHMS  
 DIELECTRIC WITHSTAND VOLTAGE: 500V RMS  
 CONTACT RESISTANCE:  
 CENTRE CONTACT: 3 mOHMS  
 OUTER CONTACT: 2 mOHMS
  - 5. **MECHANICAL CHARACTERISTICS**  
 DURABILITY: 50 CYCLES  
 TORQUE SETTING: 0.15-0.20 NM
  - 6. FOR TECHNICAL DATA REFER TO YOUR LOCAL TYCO ELECTRONICS SALES OFFICE
  - 7. ALL DIMENSIONS ARE NOMINAL FOR REFERENCE ONLY UNLESS OTHERWISE STATED



						1	1	PTFE	INSULATOR	3
						1	1	BERYLLIUM COPPER $\Delta$	CONTACT	2
						1	1	ZINC ALLOY $\Delta$	BODY	1
						5	15	MATERIAL	DESCRIPTION	ITEM
QUANTITY PER ASSY										PARTS LIST

THIS DRAWING IS A CONTROLLED DOCUMENT.		DWN J.SANDWELL 16JUN04	Tyco Electronics Corporation Bideford, UK, EX39 4HE			
DIMENSIONS: mm		CHK S.PARLOW 16JUN04				
		APVD F.WHEELER-KING 16JUN04	NAME SMA RIGHT ANGLE PCB SOCKET DIE CAST			
		PRODUCT SPEC	-			
MATERIAL SEE TABLE		FINISH -	APPLICATION SPEC	-		
		WEIGHT -	SIZE A3	CAGE CODE 00779	DRAWING NO C-1814400	RESTRICTED TO -
CUSTOMER DRAWING			SCALE NTS	SHEET 1	OF 1	REV B